



MyD88 Polyclonal Antibody

Catalog No	YP-Ab-13947
Isotype	IgG
Reactivity	Human;Mouse;Rat;Pig
Applications	IF;WB;IHC;ELISA
Gene Name	MyD88
Protein Name	Myeloid differentiation primary response protein MyD88
Immunogen	The antiserum was produced against synthesized peptide derived from human MyD88. AA range:171-220
Specificity	MyD88 Polyclonal Antibody detects endogenous levels of MyD88 protein.
Formulation	Liquid in PBS containing 50% glycerol, 0.5% BSA and 0.02% sodium azide.
Source	Polyclonal, Rabbit,IgG
Purification	The antibody was affinity-purified from rabbit antiserum by affinity-chromatography using epitope-specific immunogen.
Dilution	IF: 1:50-200 Western Blot: 1/500 - 1/2000. Immunohistochemistry: 1/100 - 1/300. Immunocytochemistry: 1/200 - 1/1000. ELISA: 1/20000. Not yet tested in other applications.
Concentration	1 mg/ml
Purity	≥90%
Storage Stability	-20°C/1 year
Synonyms	MYD88; Myeloid differentiation primary response protein MyD88
Observed Band	33kD
Cell Pathway	Cytoplasm . Nucleus .
Tissue Specificity	Ubiquitous.
Function	disease:Defects in MYD88 are the cause of MYD88 deficiency (MYD88D) [MIM:612260]; also called recurrent pyogenic bacterial infections due to MYD88 deficiency. Patients suffer from autosomal recessive, life-threatening, often recurrent pyogenic bacterial infections, including invasive pneumococcal disease, and die between 1 and 11 months of age. Surviving patients are otherwise healthy, with normal resistance to other microbes, and their clinical status improved with age.,function:Adapter protein involved in the Toll-like receptor and IL-1 receptor signaling pathway in the innate immune response. Acts via IRAK1, IRAK2 and TRAF6, leading to NF-kappa-B activation, cytokine secretion and the inflammatory response. Increases IL-8 transcription. May be involved in myeloid differentiation.,similarity:Contains 1 death domain.,similarity:Contains 1 TIR domain.,subunit:Homodimer. Also forms hetero

**Background**

This gene encodes a cytosolic adapter protein that plays a central role in the innate and adaptive immune response. This protein functions as an essential signal transducer in the interleukin-1 and Toll-like receptor signaling pathways. These pathways regulate that activation of numerous proinflammatory genes. The encoded protein consists of an N-terminal death domain and a C-terminal Toll-interleukin1 receptor domain. Patients with defects in this gene have an increased susceptibility to pyogenic bacterial infections. Alternate splicing results in multiple transcript variants. [provided by RefSeq, Feb 2010],

matters needing attention

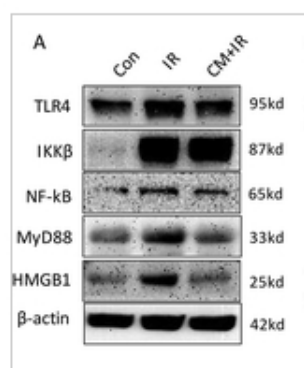
Avoid repeated freezing and thawing!

Usage suggestions

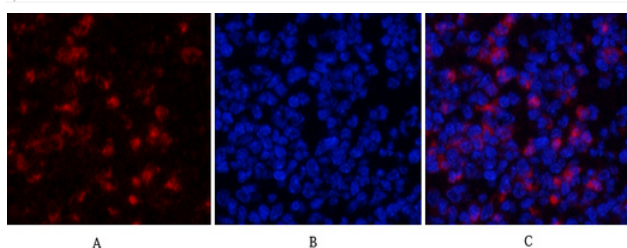
This product can be used in immunological reaction related experiments. For more information, please consult technical personnel.



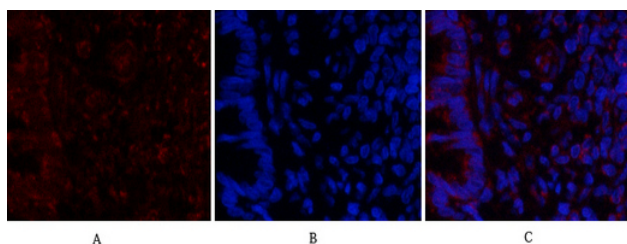
Products Images



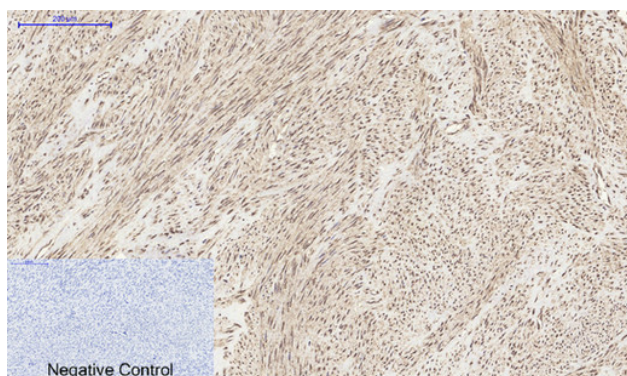
Chen, Yu-Zhong, et al. "Anti-Oxidative and Immuno-Protective Effect of Camel Milk on Radiation-Induced Intestinal Injury in C57BL/6 J Mice." Dose-Response 19.1 (2021): 15593258211003798.



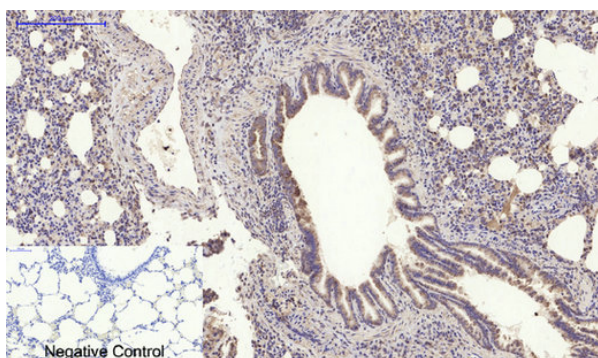
Immunofluorescence analysis of mouse-spleen tissue. 1, MyD88 Polyclonal Antibody (red) was diluted at 1:200 (4°C, overnight). 2, Cy3 labeled Secondary antibody was diluted at 1:300 (room temperature, 50min). 3, Picture B: DAPI (blue) 10min. Picture A: Target. Picture B: DAPI. Picture C: merge of A+B



Immunofluorescence analysis of rat-lung tissue. 1, MyD88 Polyclonal Antibody (red) was diluted at 1:200 (4°C, overnight). 2, Cy3 labeled Secondary antibody was diluted at 1:300 (room temperature, 50min). 3, Picture B: DAPI (blue) 10min. Picture A: Target. Picture B: DAPI. Picture C: merge of A+B



Immunohistochemical analysis of paraffin-embedded Human-uterus tissue. 1, MyD88 Polyclonal Antibody was diluted at 1:200 (4°C, overnight). 2, Sodium citrate pH 6.0 was used for antibody retrieval (>98°C, 20min). 3, Secondary antibody was diluted at 1:200 (room temperature, 30min). Negative control was used by secondary antibody only.



Immunohistochemical analysis of paraffin-embedded Rat-lung tissue. 1, MyD88 Polyclonal Antibody was diluted at 1:200 (4°C, overnight). 2, Sodium citrate pH 6.0 was used for antibody retrieval (>98°C, 20min). 3, Secondary antibody was diluted at 1:200 (room temperature, 30min). Negative control was used by secondary antibody only.